

VENUS®

1000 W HPS, MBI and 2000W MBI

LAMP COMPARTMENT
IP 65



RANGE

Venus® is a high performance luminaire designed for the lighting of large areas. A superior quality floodlight that can accommodate 1000W HPS, MBI, and 2000W MBI lamps (can be used with lamps such as the Osram HQI-TS-2000W/D/S; lamp distance and ignitor should be checked). This floodlight provides a powerful symmetric and asymmetric distribution from a special optical system which also offers excellent glare control. It is used with remote control gear.

APPLICATIONS

The high performance design of the asymmetric Venus® enables it to be used in the installations such as stadiums, or airport grounds where its' asymmetric reflector system will reduce the number of luminaires required. The symmetric Venus® is specially suitable for large indoor or outdoor sport stadiums or fascia lighting of very large buildings. All electrical components are attached to a zinc coated steel gear tray.

CONSTRUCTION

Venus is made of die-cast aluminium with cooling fins, and is finished in durable black paint. There is an anodized dimpled reflector system providing symmetric or asymmetric beam. The protective toughened glass front cover is housed within a die-cast aluminium frame which is hinged to the body, and incorporates a silicon rubber gasket to provide IP 65 ingress protection. Both the symmetric and asymmetric reflectors have an outstanding optical performance which offer a reduction in the number of floodlights required thus in the reduction of electrical load of a project. All external screws are made of stainless steel.

ELECTRICAL

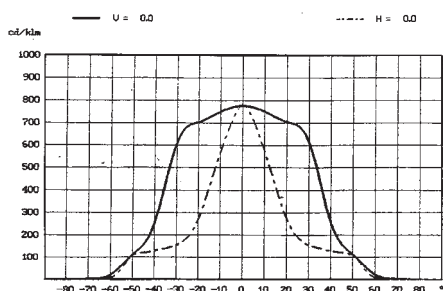
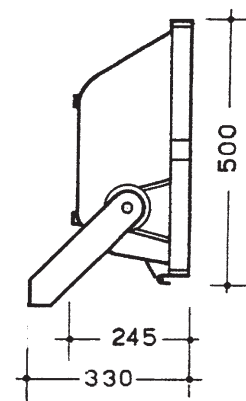
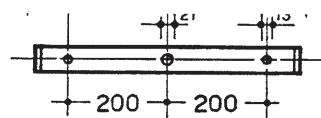
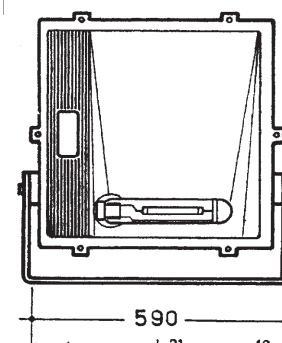
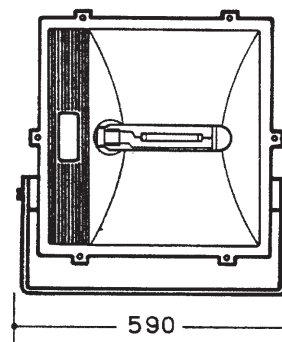
The Venus floodlight has a remote control gear box made from die cast aluminium which can be provided on request. High temperature silicon insulated conductors are used throughout. The floodlight is fitted with an integral ignitor, in order to simplify installation and allow greater distance between gear tray and lamps.

MECHANICAL

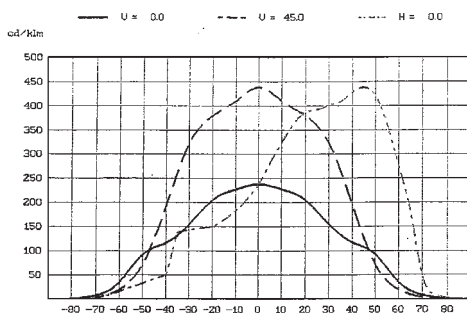
Mounting is via a deep galvanized heavy duty steel bracket with an incorporated aiming device.

SPECIFICATION

Designed in accordance with the following Standards: CEI 34-21 and EN60598-1.



SYMMETRIC 1000 W MBI-T



ASYMMETRIC 1000 W MBI-T

ORDERING DATA

CODE N°		LAMP	LAMP HOLDER WEIGHT KG	
SYMMETRIC	ASYMMETRIC			
NX 3410	NX 3420	EMPTY 1000W	E40	12,70
NX 3411	NX 3421	EMPTY 1000W c/w Ignitor box	E40	13,10
NX 3430	NX 3440	EMPTY 2000W	K12S-7	12,70
NX 3431	NX 3441	EMPTY 2000W c/w Ignitor box	K12S-7	13,10
NX3400		EMPTY CONTROL GEAR		3,70
NX3454		1000W HPS WIRED CONTROL GEAR		9,80
NX3455		1000W MBI WIRED CONTROL GEAR		9,80
NX3456		2000W MBI WIRED CONTROL GEAR		11,50