





CORROSION RESISTANT WEATHER PROOF FLOODLIGHT

RANGE

Roma® is a weather proof and non corrosive floodlight which can accommodate 150W/250W/400W HPS, 250W/400W MBI and 250W MBF lamps. It may come with either symmetric or asymmetric reflector.

APPLICATIONS

Roma® is suitable for medium and large areas where there is need for a long period or round the clock floodlighting such as: large car parks, building sites, sport fields, exhibition halls, general storage and stations. Roma is highly recommended for sites near the sea.

CONSTRUCTION

Made of injection moulded high quality impact and heat resistant black coloured polycarbonate. The control gear cover is made of black injection moulded impact and heat resistant polycarbonate. An extremely efficient silicon gasket provides ingress protection IP 65. In order to maximize light output a high purity anodized aluminium reflector is used. All external screws are made of stainless steel.

ELECTRICAL

The control gear box is provided with a cable gland and a 2-way terminal block. High temperature silicon insulated conductors are used throughout.

MECHANICAL

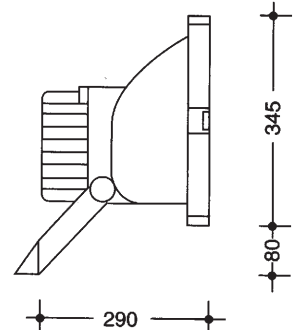
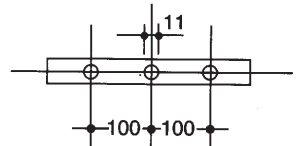
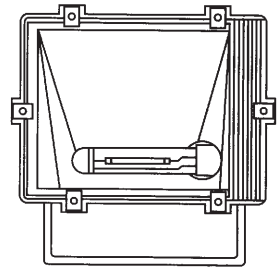
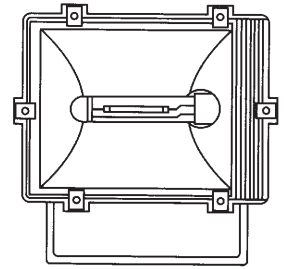
Mounting is via a heavy gauge painted steel bracket with an incorporated aiming device.

ACCESSORIES

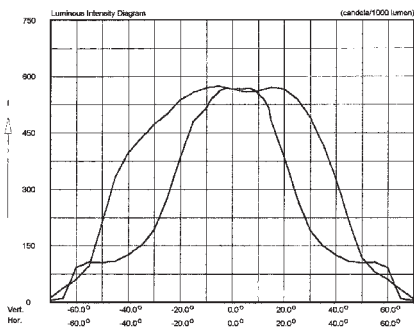
Wire guard: A steel wire guard is available to protect the glass cover from impact damage.

SPECIFICATION

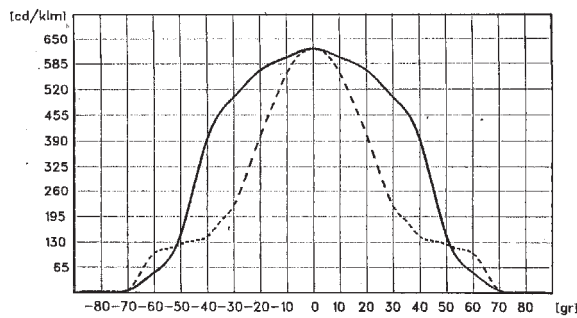
Designed in accordance with the following Standards: CEI 34 -21, and EN60598-1.



Cartesian Intensity Diagram



400 W HPS-T



250 W HPS-T symmetric

ORDERING DATA				
CODE N°		LAMP	LAMP HOLDER	WEIGHT
SYMMETRIC	ASYMMETRIC			
NX 3800	NX 3850	EMPTY	E40	4,80
NX 3824	NX 3874	150 W HPS	E40	7,60
NX 3814	NX 3864	250 W HPS	E40	8,50
NX 3825	NX 3875	400 W HPS	E40	8,50
NX 3811	NX 3861	250 W MBI	E40	8,50
NX 3815	NX 3865	400 W MBI - 4,20 A	E40	9,70
NX 3849	NX 3899	400 W MBI - 3,40 A	E40	9,70
NX 3833	NX 3883	250 W MBF	E40	8,20
NX 3207		WIRE GUARD		0,50