





CORROSION RESISTANT, WEATHER AND VANDAL PROOF FITTING

RANGE

A highly aesthetic non corrosive weather proof fitting suitable for different types of energy saving lamps i.e. low pressure sodium (SOX) 18W and compact fluorescent FLC 1X18W, FLC 1X36W, FLC 2x18W and 36W lamps.

APPLICATIONS

The ZEUS® range is suitable for outdoor and indoor use, and specially suitable for security, amenity, under canopy, gardens and staircases.

CONSTRUCTION

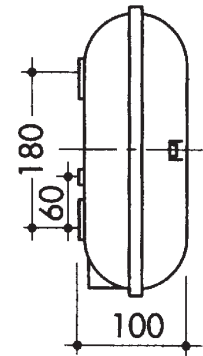
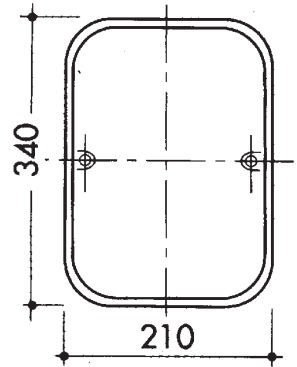
The body and diffuser are made of injection moulded heat and impact resistant polycarbonate to provide the ultimate in vandal resistance. An extremely efficient polyurethane gasket is injected into the luminaire body in order to achieve high ingress protection of IP 65.

ELECTRICAL

There are two different white painted gear trays: one is suitable for E27 and B22 lampholder and the other one for compact fluorescent lamp lampholders.

SPECIFICATION

Designed in accordance with the following Standards: IEC 598 - CEI 34-21



ORDERING DATA				
CODE N°		LAMP	LAMP HOLDER	WEIGHT KG
BLACK	GREY			
NX 4300	NX 4200	EMPTY	E27	1,26
NX 4301	NX 4205	EMPTY	B22	1,26
NX 4302	NX 4201	EMPTY 1/18	2G11	1,26
NX 4303	NX 4202	EMPTY 1/36	2G10	1,26
NX 4305	NX 4203	EMPTY 2/18	2G11	1,26
NX 4311	NX 4211	FLC 1/18	2G11	1,80
NX 4313	NX 4213	FLC 1/36	2G10	1,82
NX 4312	NX 4212	FLC 2/18	2X2G11	1,82
NX 4335	NX 4235	18 SOX	B22	1,80