



UNIVERSAL®

DIE CAST ALUMINIUM AND POLYCARBONATE STREET LIGHTING LANTERN

RANGE

Universal® uses the latest technology in design and manufacturing with an outstanding optical performance and a high degree of ingress protection IP 65, as well as electrical safety insulation Class 2 Double insulation. Can accommodate 250W/400W HPS, MBI, and MBF lamps.

APPLICATION

Universal® is a high performance fitting designed for lighting motorways and major traffic routes.

CONSTRUCTION

The housing and frame are made of die cast aluminium finished in a electrostatically applied special metallic grey polyester paint with UV protection, that prevents against corrosion and saltwater vapour. The body consists of two completely separate compartments: the lamp compartment is made of die-cast aluminium with ingress protection IP 65. The gear compartment is housed in a separate die-cast aluminium compartment with a polycarbonate cover which is hinged via two stainless steel hooks. Universal® is a versatile fitting that enables you to use an injection moulded polycarbonate bowl for added vandal resistance at low mountings, or a flat glass or a prismatic glass bowl. The outstanding optical performance is due to the high purity anodized aluminium reflector. The reflector is designed in such a way as to maximize spacing, uniformity and luminance. This street lantern comes with an overall IP65 ingress protection. The lamp holder can be easily adjusted horizontally to attain different photometric needs.

ELECTRICAL

All electrical accessories are pre-wired on a removable gear tray made of high impact thermoresistant polycarbonate which gives the fitting a Class II isolation. The gear compartment can be easily accessed by opening the two quick-release stainless steel hooks. High temperature silicon insulated conductors are used throughout. Electrical connections are accessed by plug and socket system. The lamp compartment is easily accessible via four stainless steel hooks which are attached to the die-cast body. It is also possible to attach a photocell switch.

MECHANICAL

Suitable for either side entry or post mounting. On request, you can fit a safety device.

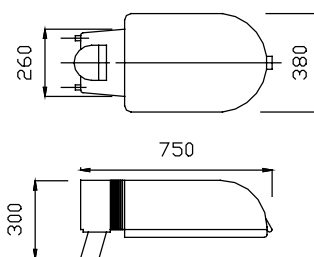
SPECIFICATION

Designed in accordance to the following European Standards: IEC 589-CEI 34-21.

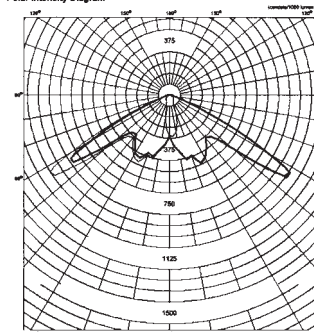
Designed by: Frederick Schradonerz

LAMP COMPARTMENT
IP 65

ELECTRIC COMPARTMENT
IP 65

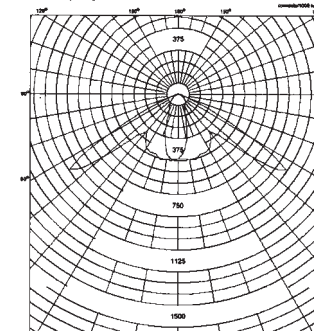


Polar Intensity Diagram



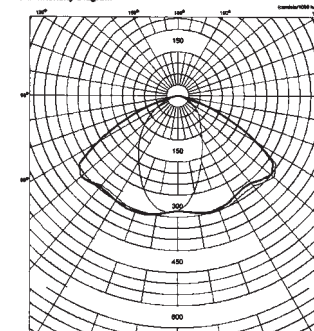
UNIVERSAL/PERSA 400W HPS-T flat glass

Polar Intensity Diagram



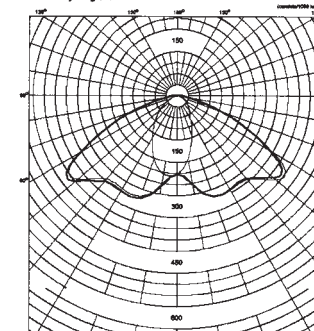
UNIVERSAL/PERSA 400W HPS-T polycarb.

Polar Intensity Diagram



UNIVERSAL/PERSA 400W HQI-E flat glass

Polar Intensity Diagram



UNIVERSAL/PERSA 400W HQI-E polycarb.

ORDERING DATA

CODE N°		LAMP	LAMP HOLDER	WEIGHT KG
BOWL	FLAT GLASS			
NX 5910	NX 5925	EMPTY	E40	9,00
NX 5923	NX 5938	250 W HPS	E40	11,40
NX 5924	NX 5939	400 W HPS	E40	12,48
NX 5934	NX 5949	250 W MBI	E40	11,40
NX 5935	NX 5950	400 W MBI 4,20A	E40	12,48
NX 5969	NX 5984	400 W MBI 3,40A	E40	12,48
NX 5944	NX 5959	250 W MBF	E40	11,40
NX 5945	NX 5960	400 W MBF	E40	12,48

