





## RANGE

The range comes in 70W HPS, 70W/150W HQI, 80W/125W MBF, FCL 1X26W, FLC 1X42W and PAR 75W .

## APPLICATION

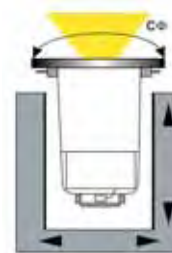
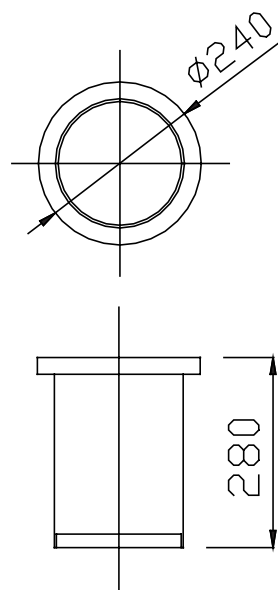
An impressive range that will help illuminate monuments, building facades, trees, foliage, panels, walls, and garden pathways.

## CONSTRUCTION

An embedded floodlight made of die cast aluminium alloy body and cover. The fitting is made of die cast aluminium. You may choose among three different types of covers: flat glass, grill dome, omni directional dome, and bi-directional dome. The 8 mm glass cover is made of heat resistant, heat hardened glass protector which withstands a load of up to 2 tonnes. The remaining two types of covers are made of durable aluminium alloy. All the different types of covers are attached to the body via 6 stainless steel screws which enable a rapid closing mechanism. IP 67 protection is given via a silicon gasket recessed inside the casing.

## SPECIFICATION

Designed in accordance to the following Standards: UNI 7142 and BS 3193.



ORDERING DATA			
CODE N°	LAMP	LAMP HOLDER	WEIGHT KG
NX 3724	EMPTY	R7S	9,00
NX 3725	70 W HPS w/o ignitor	R7S	10,60
NX 3726	70 W HPS c/w ignitor	R7S	10,60
NX 3710	70 W HQI	R7S	10,60
NX 3712	150 W HQI	R7S	11,00
NX 3736	80 W MBF	R7S	10,60
NX 3737	125 W MBF	R7S	10,80